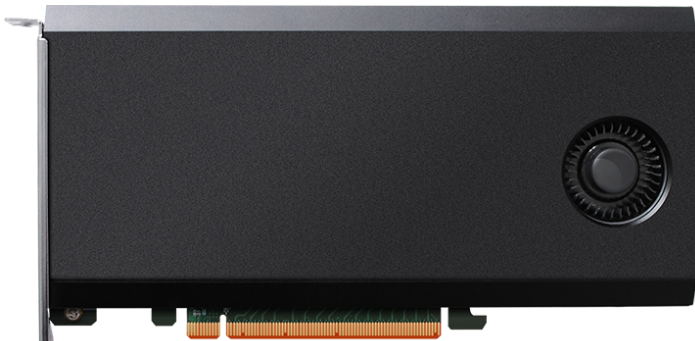


SSD7101A Drive Series

The Ultimate Acceleration Drives

- Ultimate Acceleration Drive: 41.6x Faster than SATA SSDs!
- Independent: Not locked to a specific brand or model of system platform
- Dedicated Bandwidth: Dedicated PCIe 3.0 x4 for each NVMe M.2 SSD
- Flexible: Designed for Integration into PC systems with true PCIe 3.0 x16 bandwidth
- Integrated NVMe SSD Storage Management Solution

HighPoint's SSD7101A Series represent the industry's ultimate acceleration drives, delivering truly mind blowing transfer speeds exceeding 20,000 MB's! Designed for professional grade high-end media workstations, SSD7101A series Drive Solutions leverage the latest advances in PCIe SSD technology and HighPoint's years of storage and connectivity expertise to deliver amazingly fast, low-latency secondary storage suitable for a wide range of performance-intensive applications that place heavy workloads on the GPU.



Dedicated PCIe 3.0 x16

Independent, Stand-Alone NVMe SSD Solution

SSD7101A series drives are truly independent, stand-alone solutions, and are not limited to specific applications or hardware environments. SSD7101A solutions are available as in both 500GB and 1TB form factors, and unlike conventional PCIe SSD's, are not restricted to a particular workstation or motherboard and can be used with any platform that provides a true PCIe 3.0 x16 host interface.



500GB Capacity

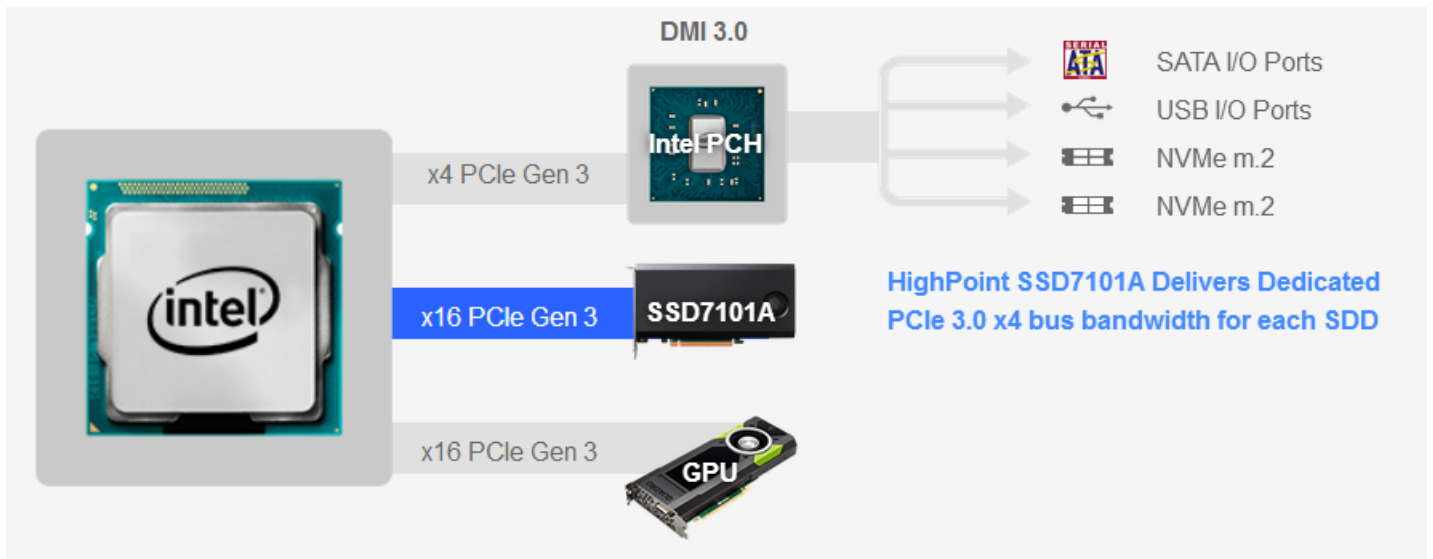
SSD7101A-500G (2x PCIe 3.0 x4 SSDs)



1,000GB Capacity

SSD7101A-010T (4x PCIe 3.0 x4 SSDs)

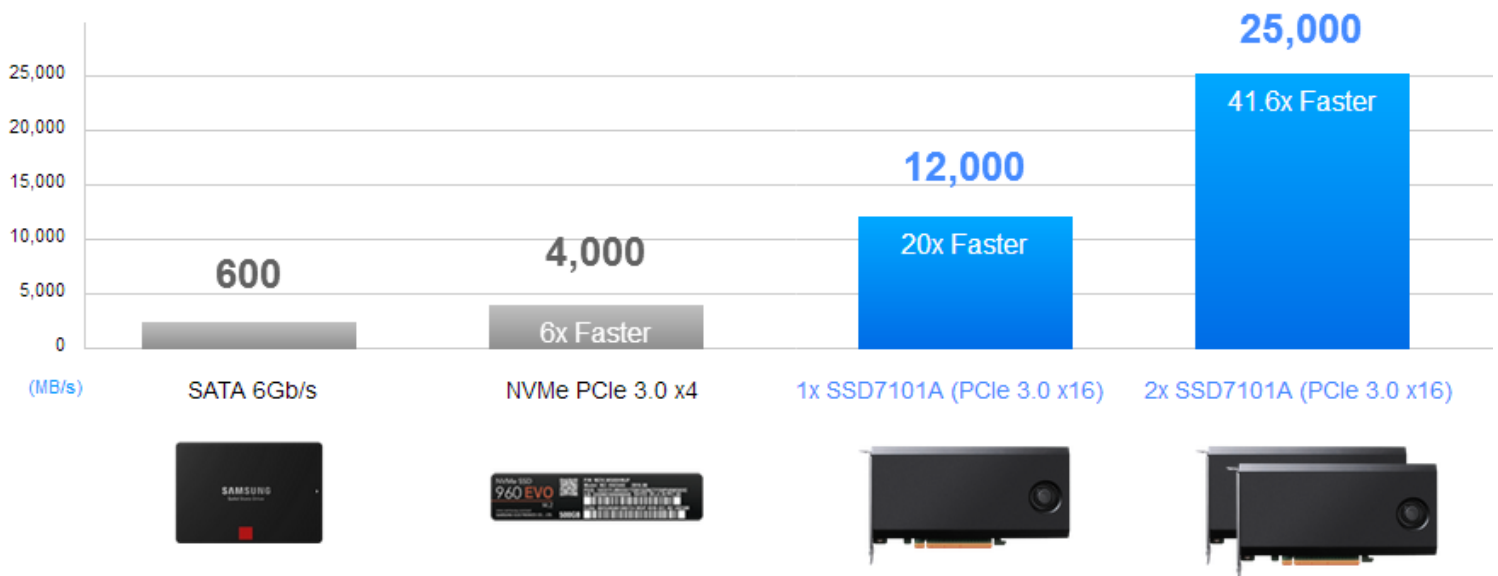
6x Faster than Onboard DMI 3.0



Onboard NVMe solutions are attached to the Intel PCH and forced to share the PCIe 3.0 x4 DMI bandwidth with onboard SATA or USB ports. The SSD7101A avoids this performance bottleneck by interfacing directly with the system CPU's PCIe lane. Similar in concept to professional GPU adapters with integrated SSD's, this unique architecture allows the drive to interface directly with the host CPU's PCIe lane and provide PCIe 3.0 x4 bandwidth for each SSD.

Up to 41.6x Faster than SATA SSD's!

The SSD7101A Drive series is a revolutionary NVMe M.2 SSD RAID Solution that intelligently utilizes the powerful resources of modern PC platforms. Unhindered by SAS and SATA interfaces, the integrated NVMe technology allows each SSD7101A to take full advantage of PCIe 3.0's superior transfer bandwidth and deliver a level of performance never before experienced by mainstream PC environments.



Affordable Performance Scalability

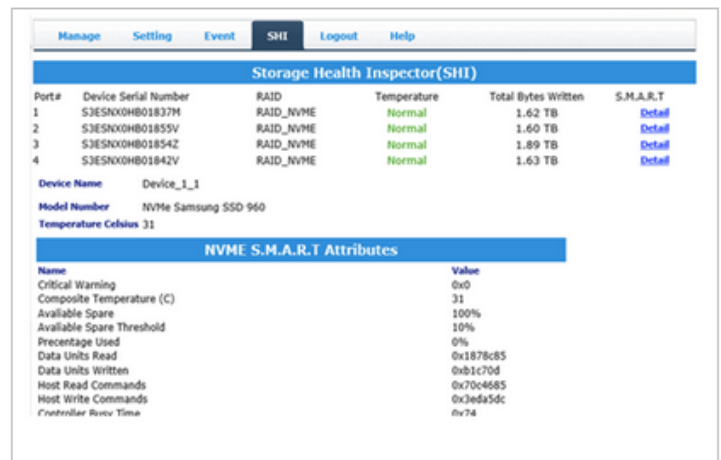
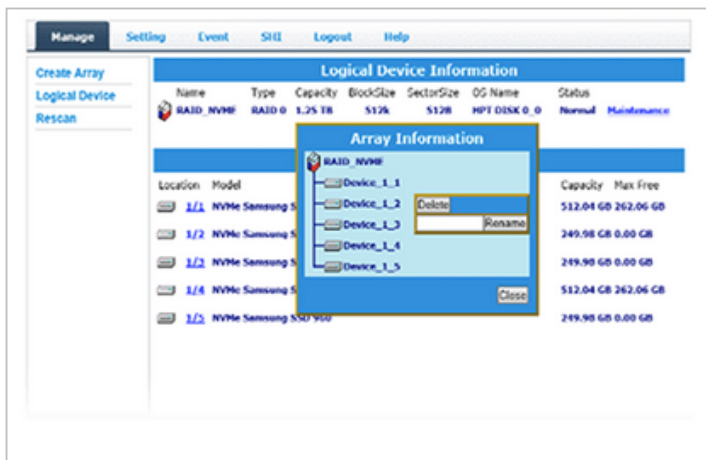
Customers can easily scale SSD7101A solutions to meet the requirements of specific applications, and at an affordable price point. Single SSD7101A's can aggregate up to four m.2 SSD modules at PCIe x16 and 4TB of storage capacity, or as many as eight modules with Dual SSD7101A's, and 8TB of storage capacity, all at a price per GB that is in parity with that of traditional SATA SSD-based secondary storage solutions.

Robust and Streamlined Design Protects and Cools SSD Modules

It's no secret that PCIe devices can generate a great deal of heat, especially during peak operation. HighPoint is no stranger to PCIe design, and has engineered the SSD71001A Drive Series to excel in high-stress conditions. The all-aluminum casing naturally dissipates waste heat away from the SSD modules, and features an integrated fan and heat sink that work in conjunction to eject excess heat away from vital components and keep ambient temperatures manageable and cool.



SSD7101A Series drives feature an easy to configure SSD drive module with integrated TRIM support and SMART monitoring. TRIM support promotes the longevity and endurance of each SSD while SMART monitoring allows customers to keep close tabs on the physical attributes of each device.



The simple, intuitive interface provides a wealth of monitoring and configuration options for novice and experts alike. The Quick Configuration menu allows new users to get everything up and running with a few simple clicks. In depth, Advanced Options allow experienced pros to fine tune configurations for specific applications.

S.M.A.R.T. Monitoring - the interface includes a SMART monitoring feature which allows you to check a variety of physical attributes of each SSD, including temperature readings, total bytes written, and disk usage values.

Feature Specifications		
Model	SSD7101A-500G	SSD7101A-010T
Bus Interface	16-lane, PCI Express 3.0 Compliant	
Port Type	M.2 NVMe (4 ports)	M.2 NVMe (4 ports)
Number of Devices	Preconfigured 2x Samsung 960 EVO 250G, 2x Open Slots	Preconfigured 4x Samsung 960 EVO 250G
Data Transfer Rates	Sequential Read: 6,800MB/s	Sequential Read: 13,000MB/s
	Sequential Write: 3000MB/s	Sequential Write: 6,000MB/s
Capacity	500GB	1TB
Storage Mode	Data storage	
Form Factor	Full Height	
Dimensions	210mm x 111mm	
Cooling	Aluminum casing with single 50mm x 50mm cooling fan	
Platform Support	Intel X99 Chipset motherboard	
	(Refer to the MB Compatibility List)	
Operating System	Windows 10 64-bit	
	Linux Kernel 3.3 or later	
Storage Health Inspector (SHI)	NVMe SSD SMART and TBW status	
TRIM Support	Yes	
Warranty	1 Year or 100TBW	1 Year or 100TBW

Storage Management	
Automatic RAID configuration	RAID 0
Optional RAID configuration for Linux	RAID 0, 1
HighPoint NVMe Manager	Browser-Based management tool
	CLI (Command Line Interface), API package
Disk media scan and repair	Yes
Device Error Recovery support	Yes

Monitoring and Management Suite	
Management Suites	Browser-Based management tool
	CLI (Command Line Interface), API package
SMTP Email Alert Notification	Yes
Alarm Buzzer	Yes

Operating Environment	
Work Temp	+5°C ~+ 55°C
Storage Temp	-20°C ~ +80°C
Relative Humidity	5% ~ 60% non condensing
Operating Voltage	PCI-e: 12V, 3.3V
Power	Typical: 25W
MTBF (Mean Time Before Failure)	920,585 Hours
Certification / Approval	FCC, CE, ROHS & REACH

Kit Contents		
Model	SSD7101A-500G	SSD7101A-010T
Contents	1x Pre-configured 500G NVMe RAID Drive	1x Pre-configured 1TB NVMe RAID Drive
	1x Quick Installation Guide	1x Quick Installation Guide

HighPoint Headquarters
 Phone 1-408-942-5800
 Fax 1-408-942-5801
 E-mail sales@highpoint-tech.com
 Website www.highpoint-tech.com
 Address 1161 Cadillac Ct. Milpitas CA, 95035

HighPoint Taiwan
 Phone + 886-2-2218-3435
 Fax + 886-2-2218-3436
 E-mail sales@highpoint-tech.com
 Website www.highpoint-tech.com
 Address 5F., No.3, Swei Lane, Jhongjheng Rd., Sindian District, New Taipei City 23148, Taiwan (R.O.C.)

HighPoint China
 Phone + 86-10-6213-0920
 Fax + 86-10-6897-5074
 E-mail sales@highpoint-tech.com
 Website www.highpoint-tech.cn
 Address 4th Floor Kehaifulin Building, NO. 12 Zhong Guan Cun South Rd, Aidian District Beijing China 100081

