

# **Rocket RAID 2640/2642 SAS Controller SLES Linux Installation Guide**

Version 1.1

Copyright © 2009 HighPoint Technologies, Inc.

All rights reserved.

Created on August 27, 2009

## Table of Contents

---

<b>1 Overview .....</b>	<b>1</b>
<b>2 Installing SLES Linux on RR2640/2642 Controller.....</b>	<b>1</b>
Step 1 Prepare Your Hardware for Installation.....	1
Step 2 Check System BIOS Settings.....	1
Step 3 Prepare the Driver Diskette.....	1
Step 4 Install SLES Linux.....	2
<b>3 Installing RR2640/2642 Driver on an Existing System.....</b>	<b>5</b>
Step 1 Install the Driver Module.....	5
Step 2 Configure System to Mount Volumes when Startup .....	6
<b>4 Monitoring the Driver .....</b>	<b>6</b>
<b>5 Updating the Driver .....</b>	<b>6</b>
<b>6 Installing RAID Management Software.....</b>	<b>6</b>
<b>7 Rebuilding Driver Module for System Update.....</b>	<b>6</b>

# 1 Overview

The purpose of this document is to provide clear instructions on how to install and use Rocket RAID 2640/2642 Controller on SLES Linux system.

## 2 Installing SLES Linux on RR2640/2642 Controller

If you would like to install SLES Linux onto drives attached to RR2640/2642 controller, please perform the following operations:

### Step 1 Prepare Your Hardware for Installation

After you attach your hard disks to RR2640/2642 controller, you can use RR2640/2642 BIOS Setting Utility to configure your hard disks as RAID arrays, or just use them as single disks.

Before installation, you must remove all the disk drives, which are not physically attached to RR2640/2642 controller, from your system.

#### Note

---

If you have other SCSI adapters installed, you must make sure the RR2640/2642 controller BIOS will be loaded firstly. If not, try to move it to another PCI slot. Otherwise you may be unable to boot up your system.

---

### Step 2 Check System BIOS Settings

In your system BIOS SETUP menu, change **Boot Sequence** in such a way that the system will first boot from floppy or CDROM, and then from SCSI. Refer to your BIOS manual to see how to set boot sequence.

If your BIOS settings do not support such a boot sequence, you can first set it to boot from floppy or CDROM. After you finish installation, set SCSI as the first boot device to boot up the system.

### Step 3 Prepare the Driver Diskette

In the following document, the floppy diskette stands for the floppy diskette which is inserted into the on-board floppy controller, the USB floppy diskette stands for the floppy diskette inserted into the USB floppy controller, the USB diskette stands for USB flash disk and USB harddisk, the USB storage stands for USB diskette and USB floppy controller.

Put the driver files on a (USB) floppy diskette.

Windows:

Insert a floppy diskette into the floppy driver, create a MS-DOS filesystem and extract the archive file to the floppy diskette.

Linux:

```
# mkdosfs /dev/fd0
# mkdir -p /mnt/floppy
# mount /dev/fd0 /mnt/floppy
# tar xzvf rr26xx-sles10sp1-i386.tgz -C /mnt/floppy
# umount /dev/fd0
```

#### Note

If the floppy diskette is inserted into an external USB floppy controller and the device name in the linux system is **sda**, then replace **fd0** in the upper command with **sda**: (e.g.)

```
# mkdosfs /dev/sda
```

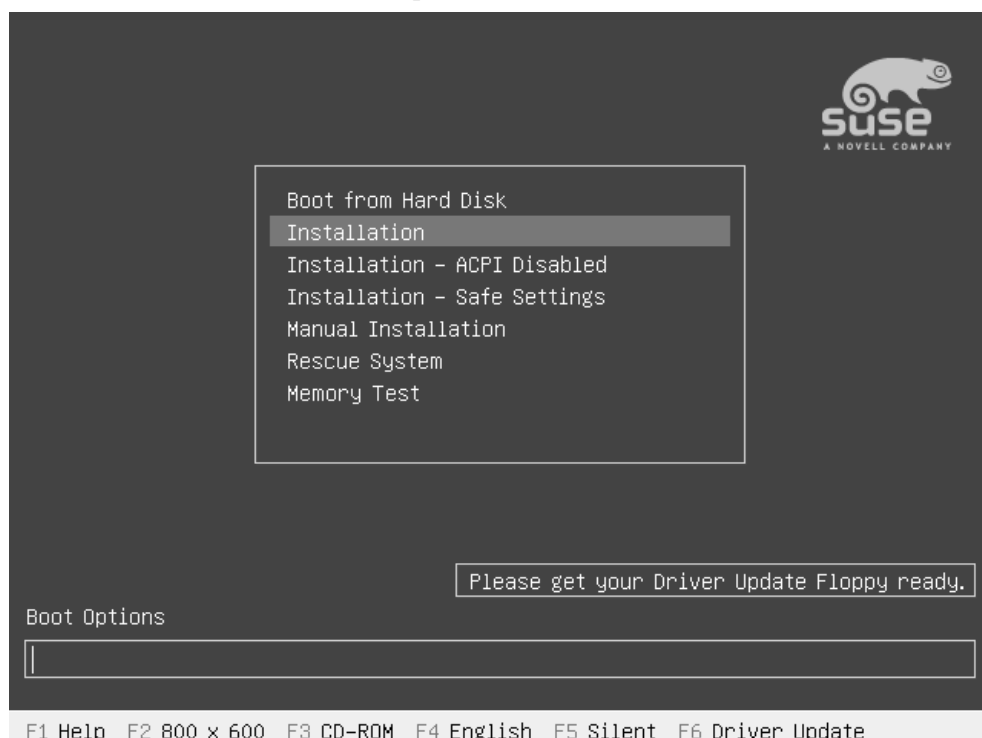
If the driver will be put on a partition of a USB harddisk and the partition name in the linux system is **sdb1**, then replace **fd0** in the upper command with **sdb1**: (e.g.)

```
# mkdosfs /dev/sdb1
```

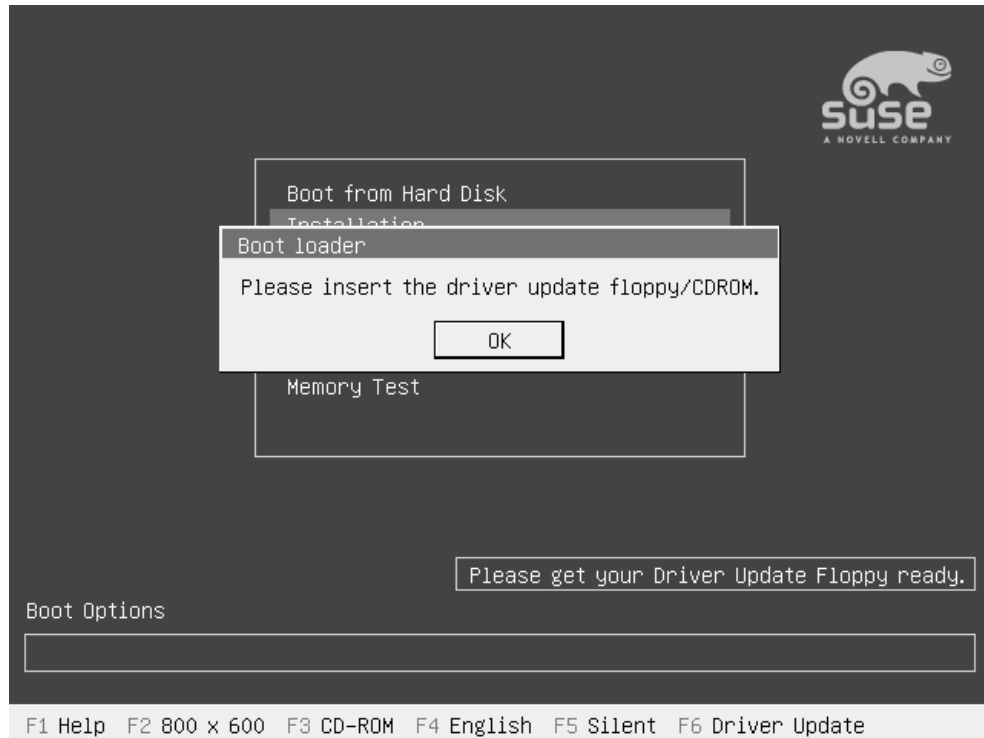
## Step 4 Install SLES Linux

Insert the driver floppy diskette in the floppy drive or insert the USB diskette in to the USB port.

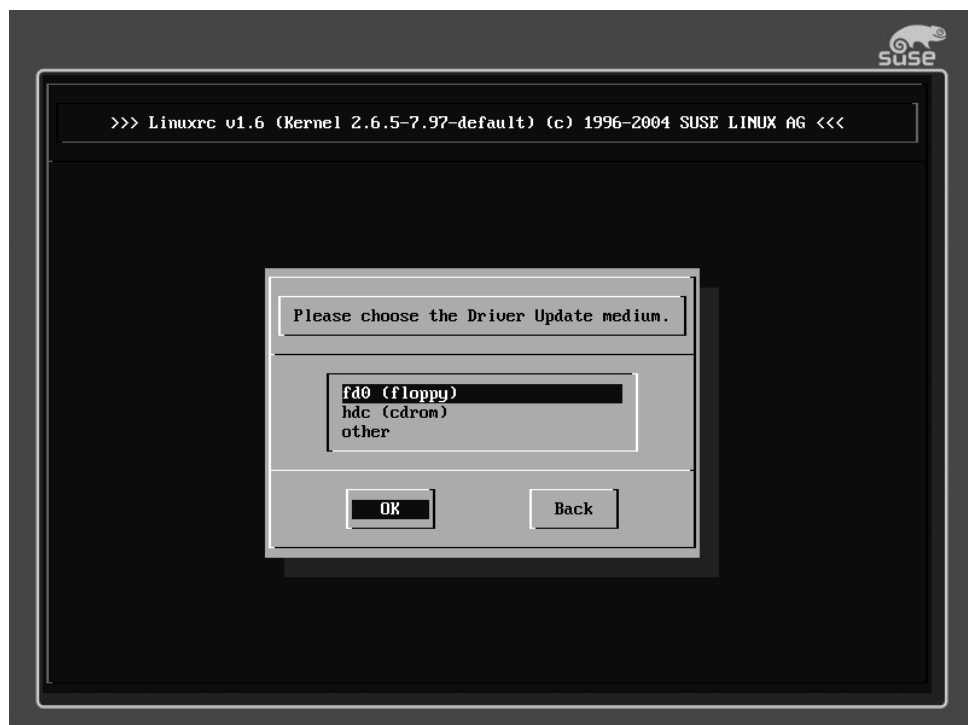
- 1) Start installing by booting from SLES installation CD.
- 2) When CD boots, select "**Installation**" option.
- 3) For SLES9/SLES9SP2/SLES9SP3, press **F6** to load the driver.



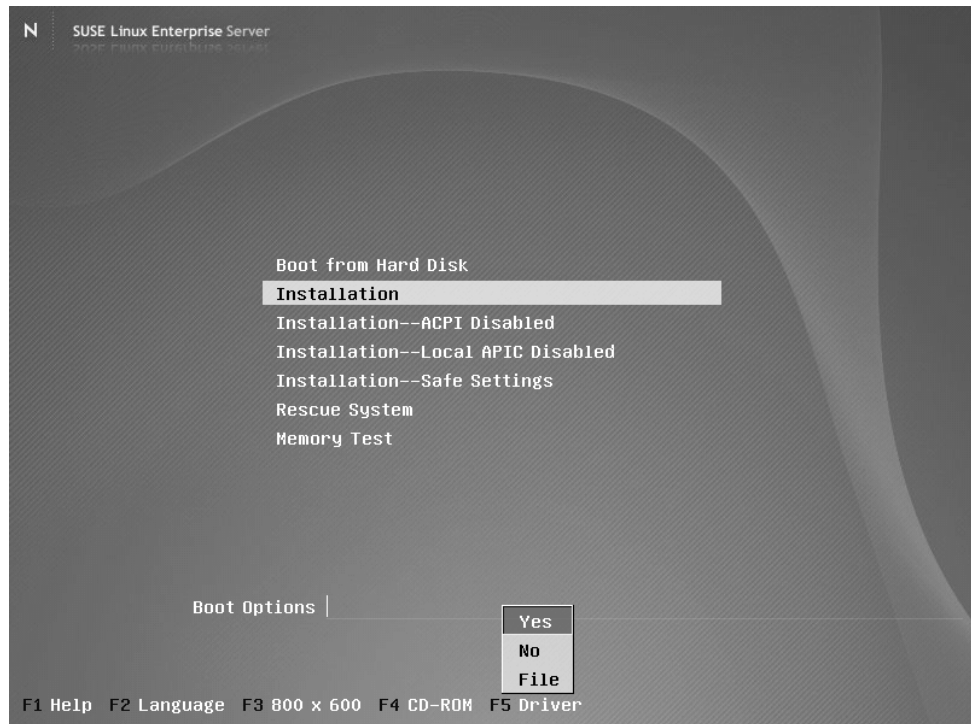
When it displays "**Please insert the driver update floppy/CDROM.**", press "OK" to continue



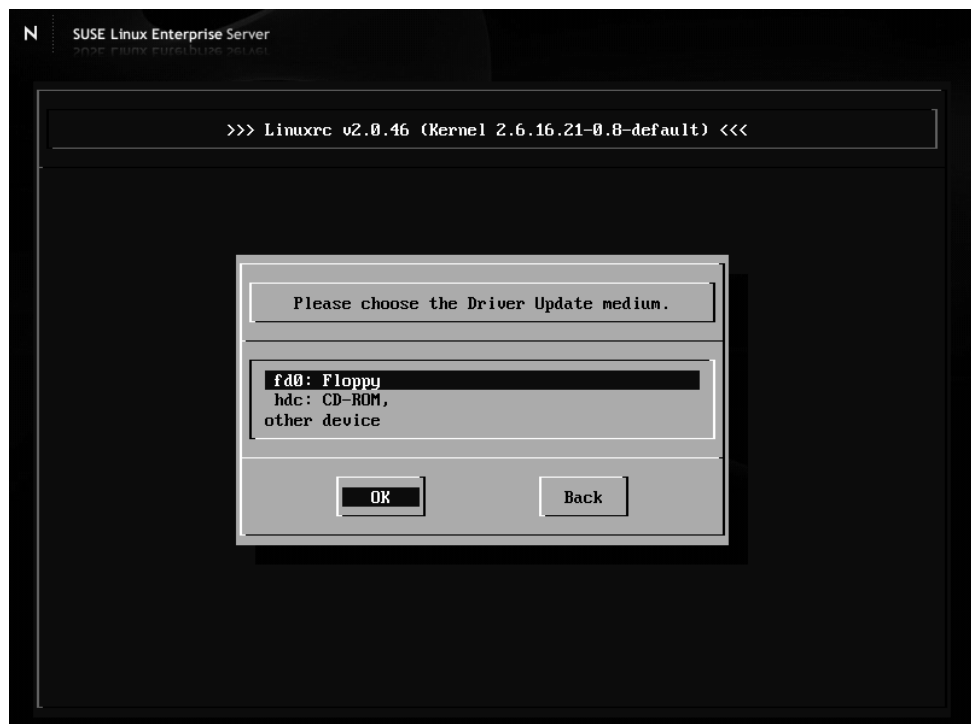
When "**Please choose the Driver Update Medium**" pop-up, press "**Back**" to continue as the installation has loaded the driver automatically.



For SLES10 and later, press **F5** and select **Yes** to load the driver.



When **"Please choose the Diver Update medium."** Menu pop-up, select **"fd0"** or **"sda"** and press **"OK"** to load the driver update medium, then press **"Back"** to continue the installation.



- 4) Continue the installation as normal. You can refer to SLES Linux documents about OS installation.
- 5) If USB storage driver disk is used during installation, some SLES version may fails to boot up. Since USB storage occupied /dev/sda device node during installation, and

RAID disk is /dev/sdb or the following. After the first reboot, USB storage is removed from system, RAID disk use /dev/sda now, but boot loader configure file and fstab are not changed.

The solution is to change boot loader configure file and fstab to make it same as the RAID disk new device node.

For example supposed RAID disk device node is /dev/sdb during installation:

Reboot the system and press **ESC** when the boot loader screen shows and select **OK** to confirm to switch to the text boot mode, and refer to the help text in the bottom of the screen to complete following commands: select and edit the entry to boot the system and change all **sdb?** to **sda?** (? stands for partition number 1, 2, 3...), e.g.:

```
kernel /boot/vmlinuz-2.6.16.12-default root=/dev/sdb1 resume=/dev/sdb1...
```

changed to:

```
kernel /boot/vmlinuz-2.6.16.12-default root=/dev/sda1 resume=/dev/sda1...
```

and then press **b** to boot up the system, execute following commands when enter the system:

```
# cd /etc
# mv fstab fstab.bak
# sed s/sdb/sda/g fstab.bak > fstab
# mount -a
# cd /boot/grub
# mv menu.lst menu.lst.bak
# sed s/sdb/sda/g menu.lst.bak > menu.lst
```

## 3 Installing RR2640/2642 Driver on an Existing System

If you are currently running Linux and would like to access drives or arrays attached to the Rocket RAID 2640/2642 controller, you can perform the following steps.

### Note

---

If you use a SCSI adapter to boot your system, you must make sure the RR2640/2642 controller BIOS will be loaded after that adapter's BIOS. If not, try to move it to another PCI slot. Otherwise you may be unable to boot up your system.

---

### Step 1 Install the Driver Module

Extract the driver archive to a temporary directory and execute the **install.sh** to install the driver to the system. For example:

```
# mkdir /tmp/dd
# tar xzvf rr26xx-sles10sp1-i386.tgz -C /tmp/dd
# cd /tmp/dd
# sh install.sh
```

If the driver of previous version has been in the initrd image, the installer will update the initrd image or it will make the driver automatically loaded while system up.

## Step 2 Configure System to Mount Volumes when Startup

Now you can inform the system to automatically mount the array by modifying the file `/etc/fstab`. E.g. You can add the following line to tell the system to mount `/dev/sda1` to location `/mnt/raid` after startup:

```
/dev/sda1      /mnt/raid      ext2    defaults    0 0
```

## 4 Monitoring the Driver

Once the driver is running, you can monitor it through the Linux `proc` file system support. There is a special file under `/proc/scsi/rr26xx/`.

### Note

---

The file name is the SCSI host number allocated by OS. If you have no other SCSI cards installed, it will be 0. In the following sections, we will use `x` to represent this number.

---

Using the following command to show driver status:

```
# cat /proc/scsi/rr26xx/x
```

This command will show the driver version number, physical device list and logical device list.

## 5 Updating the Driver

Update the driver is the same as installing driver on an Existing System, so refer to section **3 Installing RR2640/2642 driver on an Existing System.**

## 6 Installing RAID Management Software

HighPoint RAID Management Software is used to configure and keep track of your hard disks and RAID arrays attached to RR2640/2642 controller. Installation of the management software is optional but recommended.

Please refer to HighPoint RAID Management Software documents about more information.

## 7 Rebuilding Driver Module for System Update

When the system updates the kernel packages, the driver module `rr26xx.ko` should be built and installed manually before reboot.

To build the driver module, the RR2640/2642 open source package and the following building packages are needed: `gcc`, `kernel-source`. The open source package can be got from

HighPoint website: <http://www.highpoint-tech.com> while the building tools can be installed from the Novell website: <http://www.novell.com>

**Note:** the package version of kernel-source should be the same to the version of updated kernel package.

Refer to the REAME file distributed with HighPoint RR2640/2642 open source package on how to build and install the driver module.